

# Grand Teton Music Festival's Walk Festival Hall Preservation Project Complete Summer 2007

Progress Report for Week 3 ~ 9.22.06

PROJECT SCHEDULE

<b>June 07</b> PROJECT COMPLETE Landscaping Memorial Garden	
<b>May 07</b> Sound Wall Concrete sidewalks Exterior decking Steel shingles & siding	
<b>April 07</b> Wood siding Remobilize for external work Stone veneer	
<b>March 07</b> Complete painting Interior flooring & finishes Stage flooring	
<b>February 07</b> Mechanical systems Wall ceilings Start painting stage	
<b>January 07</b> Complete overhead Work in hall/stage Continue mechanical work New walls & ceilings	
<b>December 06</b> Interior framing & insulation Mechanical upgrade Interior demolition	
<b>November 06</b> Demobilize for start of ski season Re-roof lower Portion Panel completion	
<b>Oct 06</b> Start upper roof panels Start new vestibules & washrooms	
<b>Sept 06</b> Start wood trim Erect wall panels Demolition	



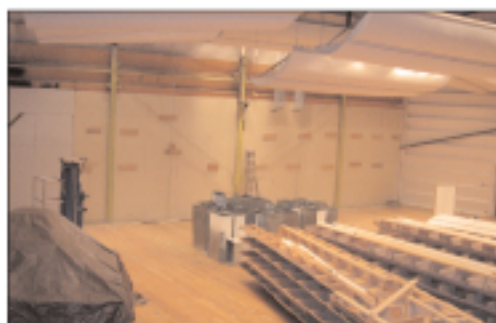
The large areas of panel installation is nearly complete.



The East and South sides of the hall are looking great!



The Northwest Bafflewall is removed.



The East Bafflewall is completely removed. Sound insulation and duct work will be going in.

**NEXT WEEK:** Begin trim installation, demo the NE Bafflewall, start excavation for the North vestibule and the restrooms.

The Walk Festival Hall Preservation Project is a collaboration of [Berlin Architects](#), [Big-D Signature](#), [Jaffe-Holden Acoustics](#), and [AK&A Project Management](#).

For more information contact the Grand Teton Music Festival at 307.733.3050.