

Grand Teton Music Festival's Walk Festival Hall Preservation Project Complete Summer 2007

Progress Report for Week 6 ~ 10.13.06

PROJECT SCHEDULE

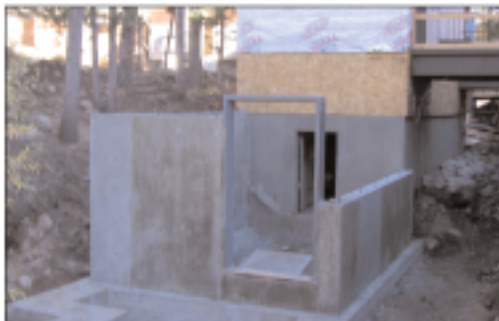
June 07 PROJECT COMPLETE Landscaping Memorial Garden	
May 07 Sound Wall Concrete sidewalks Exterior decking Steel shingles & siding	
April 07 Wood siding Remobilize for external work Stone veneer	
March 07 Complete painting Interior flooring & finishes Stage flooring	
February 07 Mechanical systems Wall ceilings Start painting stage	
January 07 Complete overhead Work in hall/stage Continue mechanical work New walls & ceilings	
December 06 Interior framing & insulation Mechanical upgrade Interior demolition	
November 06 Demobilize for start of ski season Re-roof lower Portion Panel completion	
Oct 06 Start upper roof panels Start new vestibules & washrooms	
Sept 06 Start wood trim Erect wall panels Demolition	



Started excavation for the new ticket booth, located near the stage entrance. Preparing to pour footings next week.



Poured foundations walls for the North Vestibule



Poured foundation walls for the bathroom expansion. The additional storage space underneath will also house the mechanical station.



Setting the roof panels went faster than expected. All panels have been completed on the east side. Roofers are finishing stripping the west roof and will begin setting the SIP panels next week.

NEXT WEEK: Start Setting the Cold Roof

The Walk Festival Hall Preservation Project is a collaboration of [Berlin Architects](#), [Big-D Signature](#), [Jaffe-Holden Acoustics](#), and [AK&A Project Management](#).

For more information contact the Grand Teton Music Festival at 307.733.3050.