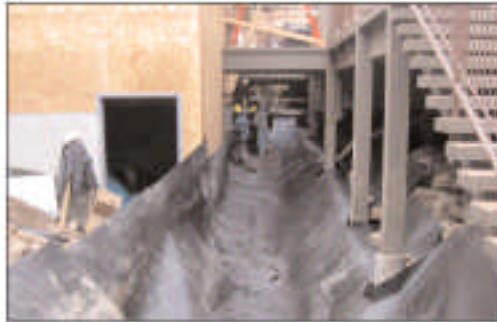


# Grand Teton Music Festival's Walk Festival Hall Preservation Project Complete Summer 2007

## Progress Report for Week 9 ~ 11.3.06

PROJECT SCHEDULE

<b>June 07</b> PROJECT COMPLETE Landscaping Memorial Garden	
<b>May 07</b> Sound Wall Concrete sidewalks Exterior decking Steel shingles & siding	
<b>April 07</b> Wood siding Remobilize for external work Stone veneer	
<b>March 07</b> Complete painting Interior flooring & finishes Stage flooring	
<b>February 07</b> Mechanical systems Wall ceilings Start painting stage	
<b>January 07</b> Complete overhead Work in hall/stage Continue mechanical work New walls & ceilings	
<b>December 06</b> Interior framing & insulation Mechanical upgrade Interior demolition	
<b>November 06</b> Demobilize for start of ski season Re-roof lower Portion Panel completion	
<b>Oct 06</b> Start upper roof panels Start new vestibules & washrooms	
<b>Sept 06</b> Start wood trim Erect wall panels Demolition	



The stream gets a new liner and profile to allow access to the mechanical area underneath the expanded bathrooms. It will be up and running this month to allow the pond in the Village to fill for ice skating this winter.



Masonry is near completion on the North wall and the roofers are getting ready to place the new cedar shakes on the lower section.



Additional concrete has been poured to get ready for the new box office near the back stage entrance.



The east roof of the Hall is complete. The pipes that you see will allow the future use of swing stages which will facilitate building maintenance.

**NEXT WEEK:** The permanent fuel tank will be installed.

The Walk Festival Hall Preservation Project is a collaboration of [Berlin Architects](#), [Big-D Signature](#), [Jaffe-Holden Acoustics](#), and [AK&A Project Management](#).

For more information contact the Grand Teton Music Festival at 307.733.3050.